



## **Rabbit anti c-erbB2 (pY1221/Y1222) (HER2) Polyclonal Antibody**

**Alternative Name(s): c-erbB2/neu protein**

### **Order Information**

- **Description:** c-erbB2 (pY1221/Y1222) (HER2)
- **Catalogue:** 500-11744
- **Lot:** See label
- **Size:** 100ug/200ul
- **Host:** Rabbit
- **Clone:** nan
- **Application:** IHC(P), WB, IP
- **Reactivity:** Hu, Ms

### **ANTIGEN PREPARATION**

A synthetic peptide containing the epitope FDNL-Y\*-Y\*-WDQ of c-erbB2 with dual phosphorylation sites Tyrosine 1221 and 1222.

### **BACKGROUND**

Oncoprotein Her-2/Neu/ c-erbB-2 belongs to one of the four members of the ErbB receptor family. They are transmembrane receptor-like tyrosine kinases which can be autophosphorylated without ligand binding process when it is overexpressed in breast cancers. Her2 is an important biomarker in breast cancer diagnosis. The antibodies/ heregulin can suppress phosphorylation of HER2 on tyrosine Y1248. Endogenous anti-HER2 antibodies can effectively suppress HER2 kinase activity and downstream signaling to inhibit the transformed phenotype of HER2-expressing tumor cells. Thus, anti-Her2 antibodies have been used widely in the treatment of the breast cancer and other carcinomas.

### **PURIFICATION**

The Rabbit IgG is purified by Epitope Affinity Purification

### **FORMULATION**

This affinity purified antibody is supplied in sterile Tris-buffered saline (pH7.2) containing antibody stabilizer

### **SPECIFICITY**

This antibody recognizes c-erbB2 with the phosphorylation sites tyrosine 1221/1222. It does not cross-react with non-phosphospecific peptide.

### **STORAGE**

The antibodies are stable for 24 months from date of receipt when stored at -20oC to -70oC. The antibodies can be stored at 2oC-8oC for three month without detectable loss of activity. Avoid repeated freezing-thawing cycles.

### **APPLICATIONS/SUGGESTED WORKING DILUTIONS\***

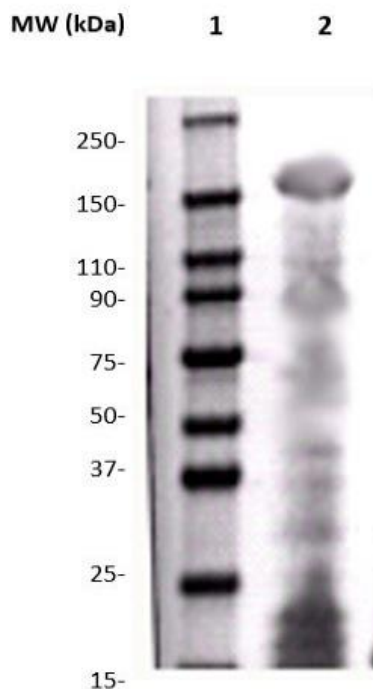
- Western Blot: 0.1-1 µg/ml
- ELISA: 0.01-0.1 µg/ml
- Immunoprecipitation: 2-5 µg/ml
- IHC: 2-10 µg/ml
- Flow cytometry: Not tested
- Molecular Weight: 200.0
- Positive Control: Kidney Tissue
- Cellular Location: Cell Membrane

\*Optimal dilutions should be determined by researchers for the specific applications.

### **FOR RESEARCH USE ONLY.**

AbboMax, Inc 2528 Qume Drive, Suite 8, San Jose, California 95131, USA  
1 408-573-1898 (Tel). 1 408-573-1858 (Fax). [www.abbomax.com](http://www.abbomax.com) [info@abbomax.com](mailto:info@abbomax.com)

## DATA ATTACHMENTS



Western Blot: The whole lysate derived from SKBR3 (20 ug/lane) immunoblotted by Rabbit anti -c-erbB2(pY1221/1222) (Cat# 500-11744) at 1:500. Observed a major immunoreactive band at molecular weight ~200 kDa.

## REFERENCES

### FOR RESEARCH USE ONLY.

AbboMax, Inc 2528 Qume Drive, Suite 8, San Jose, California 95131, USA  
1 408-573-1898 (Tel). 1 408-573-1858 (Fax). [www.abbomax.com](http://www.abbomax.com) [info@abbomax.com](mailto:info@abbomax.com)